

Light efficiency:

80 Lumen/Watt

Color temperature:

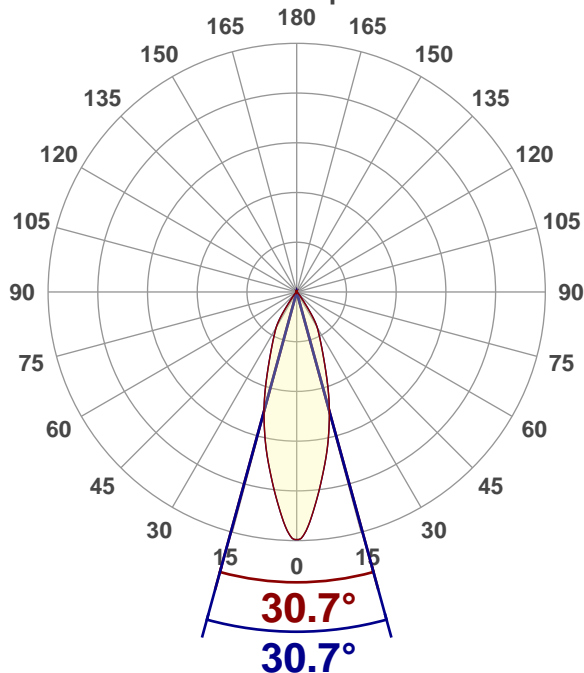
4074 K

Light quality:

CRI:90.8, R_g:90.9, R_f:98.2**P: 2 / V: - / F: 3****Output: 4545 lm****Peak: 11758 cd****Power: 57.1 W****Voltage: 120 V****Current: 0.478 A****PF: 1.0****THD: 5.38 %**

Angular Distribution

0° and 90° plane



Product name:

GEN06-4040-MSxxxx

Test Date:

2020-10-09

Beam Angle (50% of the brightness of the centre):

30.7°

Field Angle (10% of the brightness of the centre):

67°

Cut Off Angle (2.5% of the brightness of the centre):

78.5°

Beam Details

*measured at centre of beam

Mounting Height (feet)/(meter)	Lux*	Footcandles*	Beam width (feet) / (meter)
4 ft / 1.2 m	7910 lx	735 fc	2.2 ft / 0.7 m
8 ft / 2.4 m	1978 lx	184 fc	4.4 ft / 1.3 m
12 ft / 3.7 m	879 lx	82 fc	6.6 ft / 2 m
16 ft / 4.9 m	494 lx	46 fc	8.8 ft / 2.7 m
20 ft / 6.1 m	316 lx	29 fc	11 ft / 3.3 m

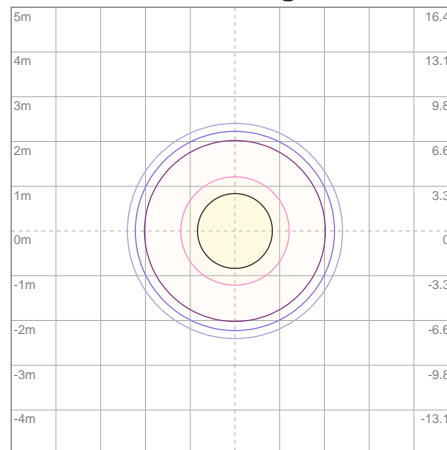
Beam center

Photometric Testing Report

Zonal Lumen Summary

Zone	Lumen	%Luminaire
0-30	3825	84.16%
0-40	4389	96.57%
0-60	4504	99.10%
60-90	11.7	0.26%
70-100	10.4	0.23%
90-120	10.4	0.23%
0-90	4516	99.36%
90-180	28.9	0.64%
0-180	4545	100.00%

ISO Lux Diagram



Mounting height: 3.05 meters (10 feet)

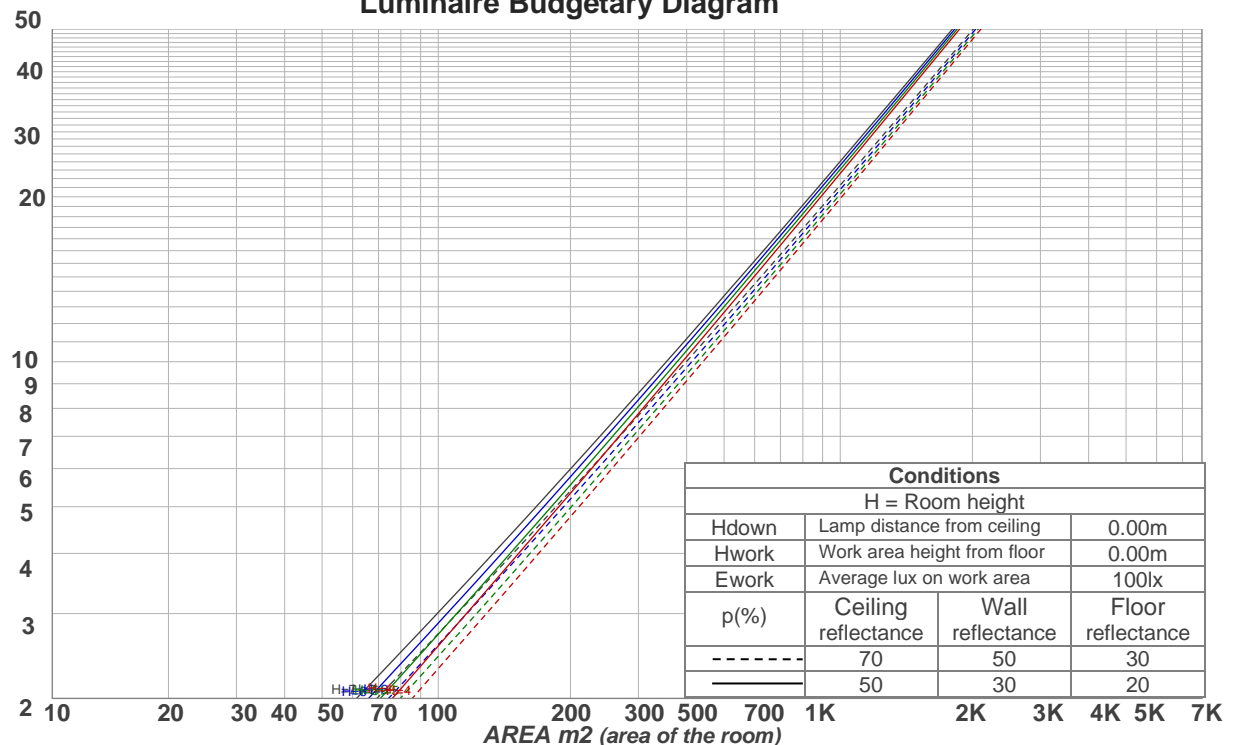
Lux at center:	1264 lx
3%	37.92 lx
5%	63.20 lx
10%	126.40 lx
30%	379.20 lx
50%	632.00 lx
Conditions: Number of planes: 8 Lux distribution on a surface when lamp is mounted at 3.05 meters from the surface.	

Coefficients of Utilization

Ceiling reflectance	80				70				50			30			10			0
Wall reflectance	70	50	30	10	70	50	30	10	50	30	10	50	30	10	50	30	10	0
Floor reflectance	20	20	20	20	20	20	20	20	20	20	20	20	20	20	20	20	20	0
RCR	(RCR: Room Cavity Ratio)				Room Values are expressed as percentage of Lumens delivered to the task surface													
0	119	119	119	119	116	116	116	116	111	111	111	106	106	106	101	101	101	99
1	114	112	109	107	112	109	107	106	105	104	102	101	100	99	98	97	96	94
2	109	105	101	98	107	103	100	97	100	97	95	97	95	93	94	93	91	89
3	105	99	95	91	103	98	94	91	95	92	89	93	90	88	90	88	86	85
4	100	94	89	85	99	93	88	85	91	87	84	89	85	83	87	84	82	80
5	96	89	84	80	95	88	84	80	86	82	79	85	81	79	83	80	78	76
6	92	85	80	76	91	84	79	76	83	78	75	81	77	75	80	77	74	73
7	89	81	76	72	88	80	75	72	79	75	71	78	74	71	77	73	71	69
8	85	77	72	69	84	77	72	68	76	71	68	75	71	68	74	70	67	66
9	82	74	69	65	81	73	69	65	72	68	65	72	68	65	71	67	65	63
10	79	71	66	62	78	70	66	62	70	65	62	69	65	62	68	64	62	61

LAMPS (number of lamps)

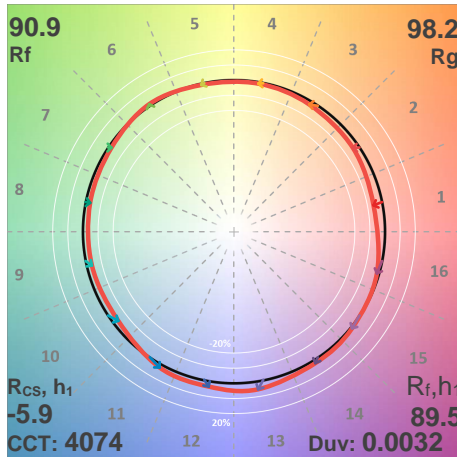
Luminaire Budgetary Diagram



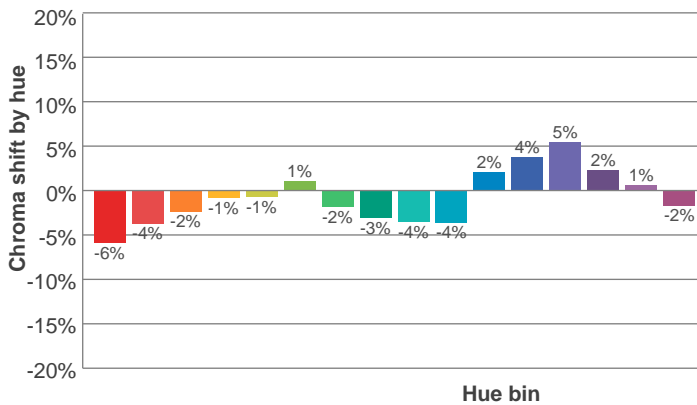
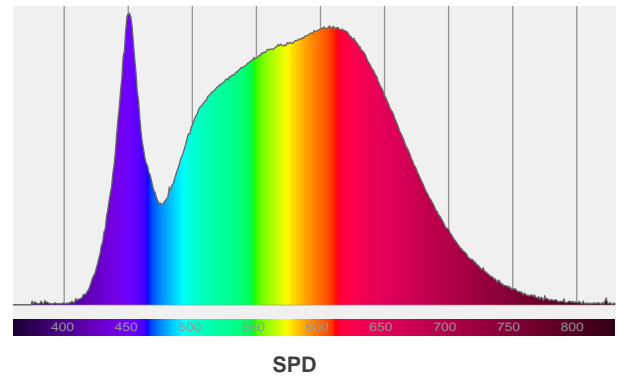
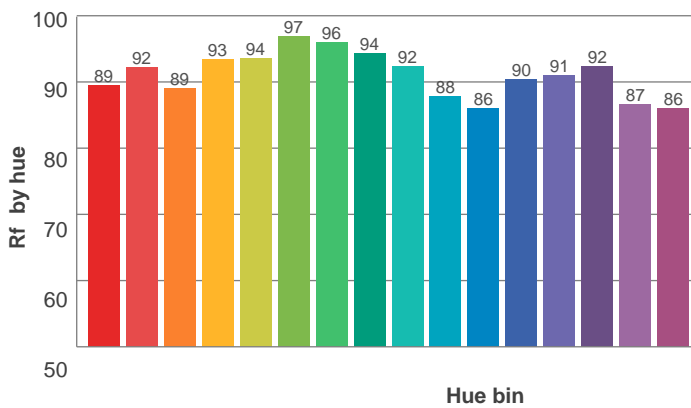
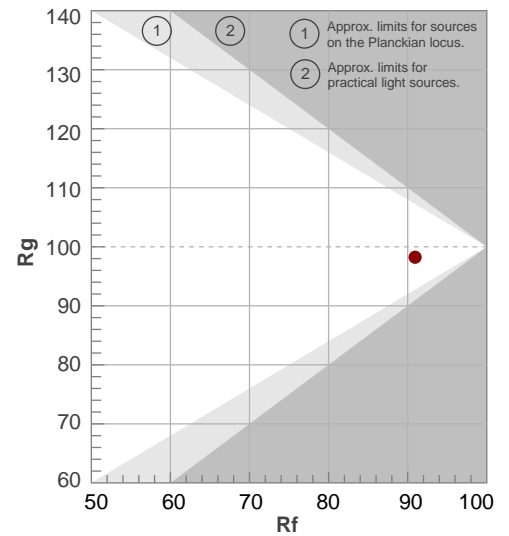
Photometric Testing Report

ANSI/IES TM-30-18

P: 2 / V: - / F: 3



Hue Bin	R _f	Shifts (%)	
		Chroma	Hue
1	89	-6%	-1%
2	92	-4%	2%
3	89	-2%	5%
4	93	-1%	3%
5	94	-1%	2%
6	97	1%	0%
7	96	-2%	-1%
8	94	-3%	0%
9	92	-4%	4%
10	88	-4%	7%
11	86	2%	9%
12	90	4%	4%
13	91	5%	-5%
14	92	2%	-3%
15	87	1%	-10%
16	86	-2%	-9%



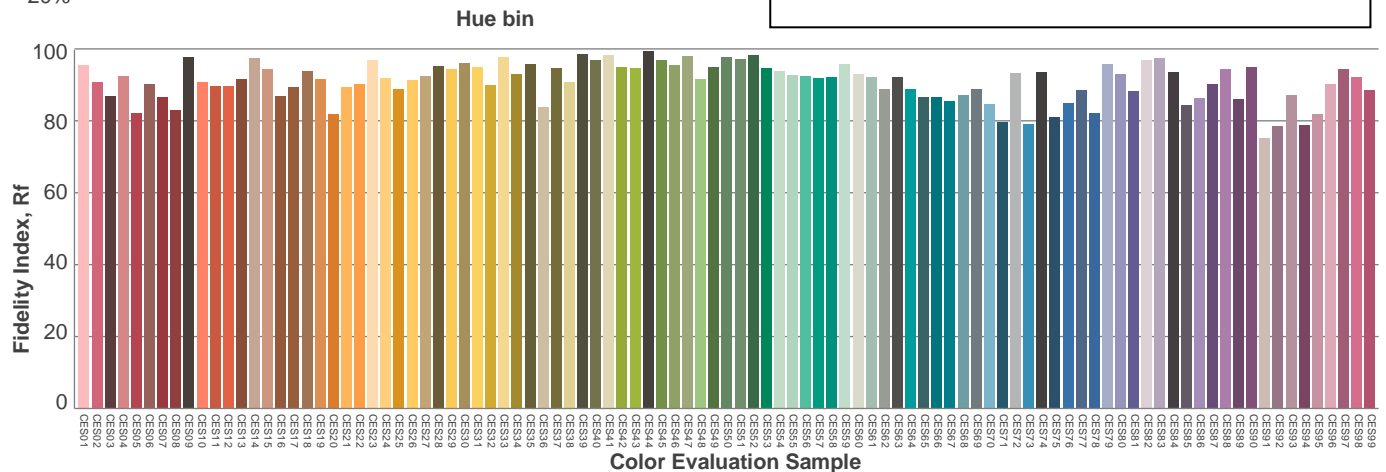
Red: 28.3%, Power=31.2mW

Blue: 12.2%, Power=29.5mW

Green: 29.7%, Power=61.4mW

UVA: 0.1%, Power=0.8mW

Dominant Wavelength: 580nm

1st Peak Wavelength: 451nm2nd Peak Wavelength: 607nm

Glare Evaluation According to UGR

p Ceiling		70	70	50	50	30	70	70	50	50	30
p Walls		50	30	50	30	30	50	30	50	30	30
p Floor		20	20	20	20	20	20	20	20	20	20
Room size X Y		Viewing direction at right angles to lamp axis					Viewing direction parallel to lamp axis				
2H	2H	15.9	16.4	16.0	16.6	16.8	15.9	16.4	16.0	16.6	16.8
	3H	15.6	16.3	16.0	16.5	16.7	15.6	16.3	16.0	16.5	16.7
	4H	15.5	16.2	15.9	16.4	16.6	15.5	16.2	15.9	16.4	16.6
	6H	15.5	16.0	15.8	16.4	16.7	15.5	16.0	15.8	16.4	16.7
	8H	15.5	16.0	15.8	16.3	16.7	15.5	16.0	15.8	16.3	16.7
	12H	15.4	15.9	15.8	16.3	16.7	15.4	15.9	15.8	16.3	16.7
4H	2H	15.5	16.2	15.9	16.4	16.6	15.5	16.2	15.9	16.4	16.6
	3H	15.4	15.9	15.8	16.3	16.7	15.4	15.9	15.8	16.3	16.7
	4H	15.3	15.7	15.7	16.2	16.7	15.3	15.7	15.7	16.2	16.7
	6H	15.2	15.7	15.7	16.0	16.4	15.2	15.7	15.7	16.0	16.4
	8H	15.2	15.6	15.7	16.0	16.3	15.2	15.6	15.7	16.0	16.3
	12H	15.1	15.5	15.6	15.9	16.4	15.1	15.5	15.6	15.9	16.4
8H	4H	15.1	15.6	15.7	15.9	16.3	15.1	15.6	15.7	15.9	16.3
	6H	15.1	15.4	15.6	15.9	16.4	15.1	15.4	15.6	15.9	16.4
	8H	15.1	15.3	15.6	15.9	16.5	15.1	15.3	15.6	15.9	16.5
	12H	15.1	15.3	15.7	15.8	16.4	15.1	15.3	15.7	15.8	16.4
12H	4H	15.1	15.4	15.6	15.8	16.3	15.1	15.4	15.6	15.8	16.3
	6H	15.1	15.3	15.6	15.9	16.5	15.1	15.3	15.6	15.9	16.5
	8H	15.0	15.2	15.6	15.8	16.4	15.0	15.2	15.6	15.8	16.4
Variation of the observer position for the luminaire distance S											
S = 1.0H		6.2 / -9.6					6.2 / -9.6				
S = 1.5H		8.9 / -10.5					8.9 / -10.5				
S = 2.0H		10.9 / -10.8					10.9 / -10.8				
Standard table		n/a					n/a				
Correction summand		n/a					n/a				
Corrected glare indices referring to 4545 lm total luminous flux											